

Fiber optic DIN terminal box **OPT-BOX22/23**

Fiber optic Din terminal box is available for the distribution and terminal connection for various kinds of optical fiber system, especially suitable for mini-network terminal distribution, in which the optical cables, patch cores or pigtailed are connected.



Features:

Standard size and reasonable structure

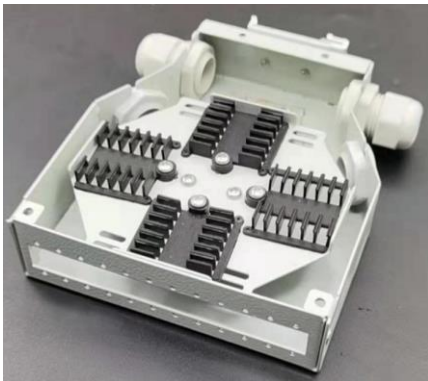
Material: cold rolled steel, adapter plate: cold rolled steel

Thickness:1.0mm

Cable tray can be overturn, easy to manage.

Optional adapter and adapter plate.

Din guide rail, easy to install on rack panel in cabinet.



Application:

Telecommunications subscriber loop

Fiber to the home (FTTH)

LAN/WAN

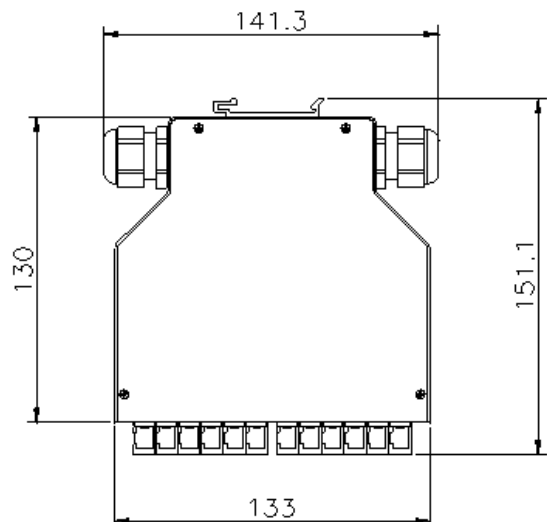
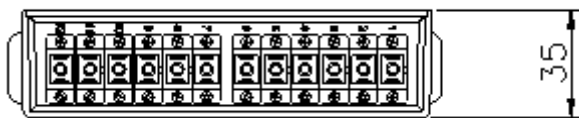
CATV

P/N:

6 SC DUPLEX / LC QUAD: **OPT-BOX22**

6 SC SIMPLEX / LC DUPLEX: **OPT-BOX23**

Size:



Packing info:

	Carton Size	G.W	Remark
Inner box	16.5*15.5*4.5cm	0.4KG(around)	With bubble pack
External box	48.5*47*35cm	24KG(around)	60sets/carton