
HDMI + USB Fiber Optic Extender

P/N: KVM-EXTEND45

1. Description

The Fiber optic extender provides extension of HDMI signals long distances over one fiber optic cable, it supports high resolution up to 1080P . The extender can use for a wide range of applications requiring long distance transmission of high resolution with high quality by its good stability and powerful security.

2. Features

- Transmits HDMI video and audio signals up to 20KM over a Fiber optic cable;
- Support video resolution up to 1920*1080P@60Hz;
- Supports over TCP/IP protocol, One-to-many applications with switches;
- Supports Stereo Audio over IP, independent to HDMI extension Support over TCP/IP;
- Supports USB (Keyboard, Mouse) extension over IP ;
- Compliance with HDMI 1.3 and HDCP 1.2 standard;
- High compatibility, can auto-match source and display device;
- Built-in automatic adjustment system, make the image smooth, clear and stable;
- Simple to install, plug and play.

3. Package list

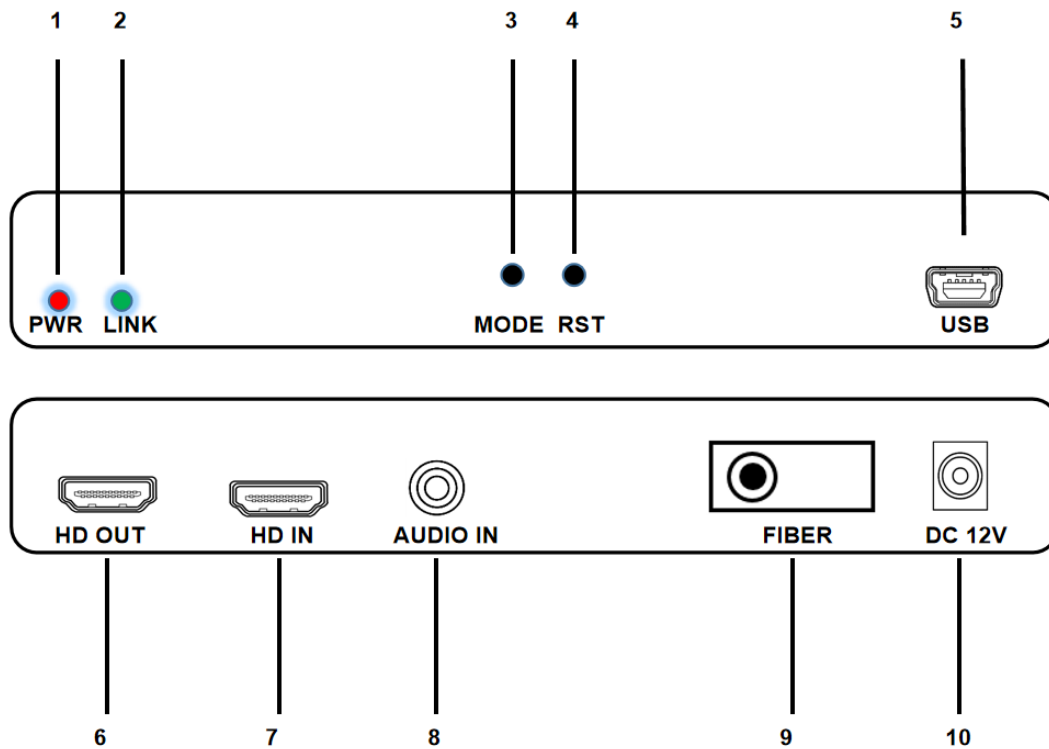
- | | |
|--------------------------------|-------|
| ● HDMI transmitter | 1 pcs |
| ● HDMI receiver | 1 pcs |
| ● USB-A to USB-MINI data cable | 1 pcs |
| ● Power adapter | 2 pcs |
| ● User manual | 1 pcs |

4. Specifications

	Parameter	Description
Video	Standards	HDMI 1.3; HDCP 1.2
	Compressed format	H.264
	Maximum pixel clock	165MHz
	Maximum data rate	6.75Gbps
	Resolution	1920X1080P@60Hz
	Connector	HDMI-A
	Impedance	100Ω
Audio	Interface	3.5mm earphone seat
	Channel	2.0 Stereo
UTP	Interface	SC
	Transmission distance	20 KM
Other	Power supply	The power adapter: DC 12V
	Power dissipation	MAX 3.3W
	Temperature	Operating: -5°C ~ +70°C
	Humidity	Operating: 5% ~ 90%
	Dimension	119*81.7*23mm
	The warranty	1 year free warranty

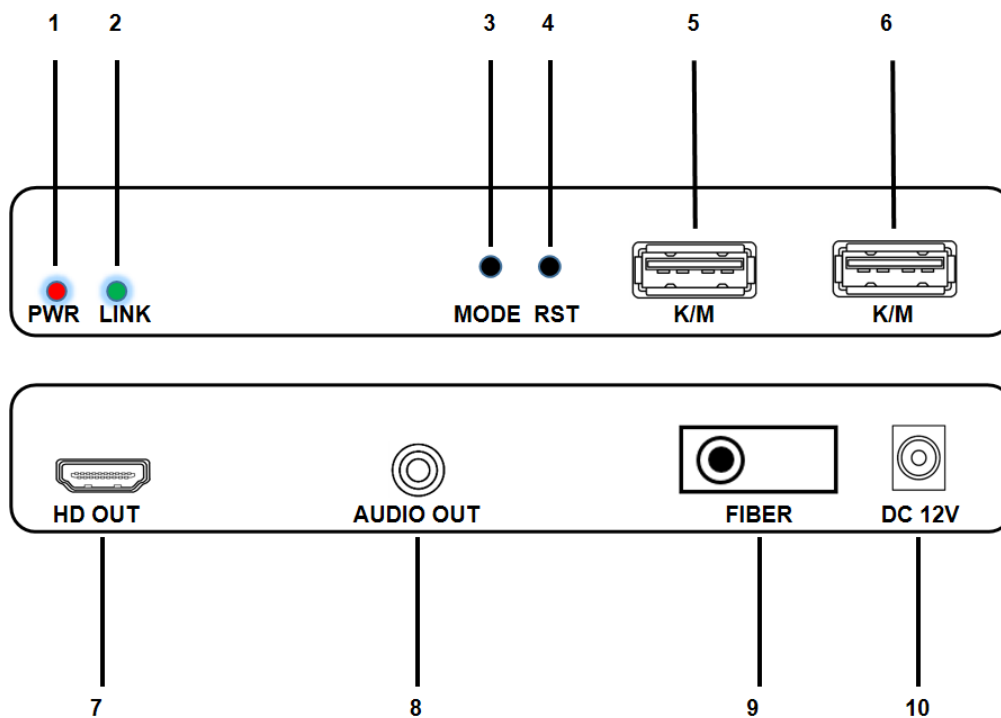
5.Panel

1、Transmitter:



Item	Description
1	PWR light: Lit when the machine is powered on
2	Link light: Flashes during data transfer
3	MODE button: Click to start DHCP mode
4	RST keys: Press and hold to restore factory settings
5	USB port: Computer USB input 入
6	HD output port: HDMI display for connecting displays
7	HD input port: Connect to your device (computer host, notebook, or box)
8	AUDIO IN: Audio input
9	FIBER: Fiber output
10	DC 12V port: 12/1A power input is required

2、 Receiver:



Item	Description
1	PWR light: Lit when the machine is powered on
2	Link light: Flashes during data transfer
3	Mode button: Click to switch Graph/Video display mode and the output will have a corresponding display alert
4	RST keys: Press and hold to restore factory settings
5	K/M port: Key mouse input
6	K/M port: Key mouse input
7	HD output port: HDMI display for connecting displays
8	AUDIO OUT: Audio output
9	FIBER: Fiber input
10	DC 12V port: 12/1A power input is required

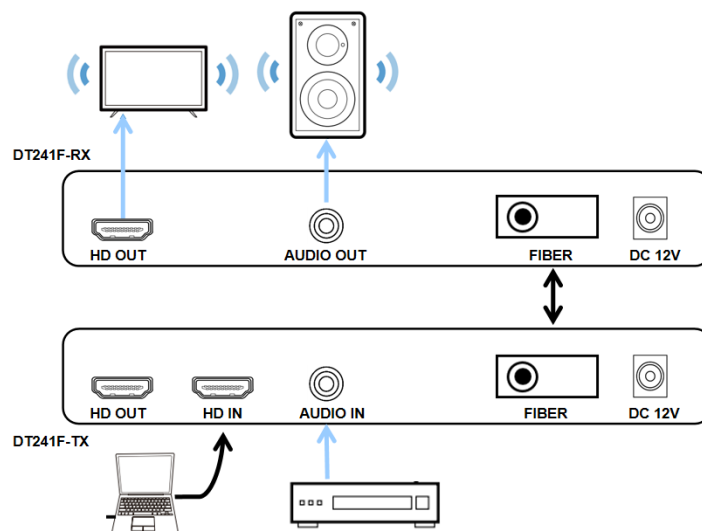
6.Installation

- 1、 Will the HDMI source access HDMI extender transmitter;
- 2、 Connect the HDMI extender the receiver to display devices (such as high-definition TV, splicing screen, etc.);
- 3、 Connect the transmitter AUDI IN to the 2.0 audio input source and the receiver AUDI OUT to the audio or amplifier;
- 4、 Connect the TX USB port to your computer or notebook via a configuration cable, and the K/M port of the RX to the mouse and keyboard.

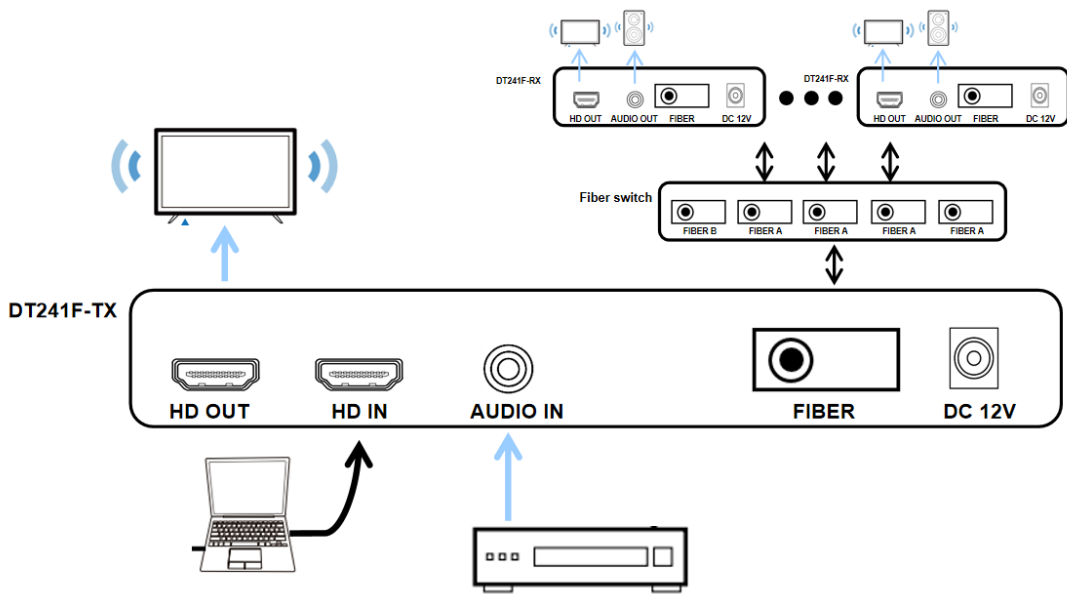
-
- 5、 Use a fiber optic cable to connect the fiber interface between the sender and receiver or cascade through an optical switch;
 - 6、 The transmitter and the receiver connected to the power , when the lamp lights up normally, normal operation of system.

7. Diagram

1、 extender (1 to 1)



2、 the allocation extender (1 to N):



8.Warranty

Please keep the user manual in a place where safety and easy to find so that you can read it immediately when meet problems.

safety instruction:

- Please do not disassemble this product by yourself because it doesn't including DIY function.
- Please don't make the product touch water in case damaged, because it is Not waterproof design.
- Please use dry cloth material when clean the product surface.
- Please do not use this product in the environment of too wet or too high temperature.
- Please avoid contact with corrosive substances.
- When there is damage or other physical damage to the product, please stop using and contact with customer service to get support.