

USB Bluetooth Adapter

Installation

Notes

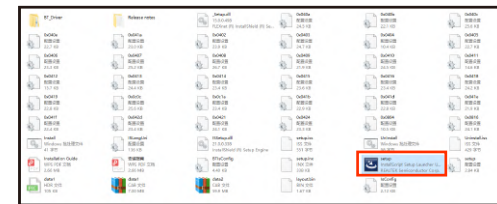
- The product applies to Windows 7 / 8 . 1 / 10 / 11, Installation and pairing operations may vary from different systems .
- The demonstration in this manual takes Windows 10 computer system as examples .Except mobile phones , the product also applies to Bluetooth devices such as mouses / keyboards / game controllers / speakers / headsets , etc
- The product is unavailable to macos / ios devices
- Once the product and your device are paired for the first time , they will enter auto-reconnection mode next time

Step One—Drive Installation

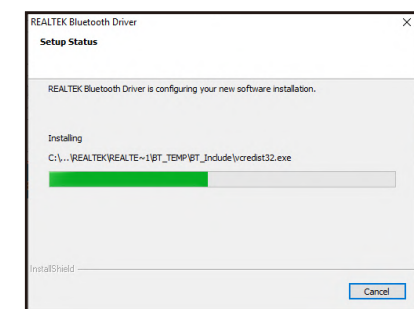
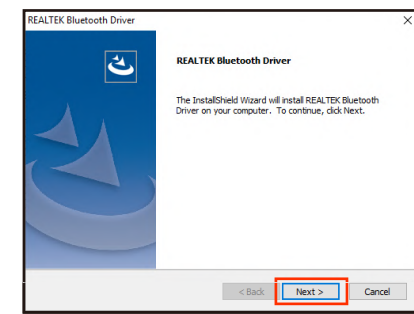
1. Plug the Bluetooth adapter into USB port of the computer, the Bluetooth menu will recognize it and display as Bluetooth icon [B] on the lower right corner immediately



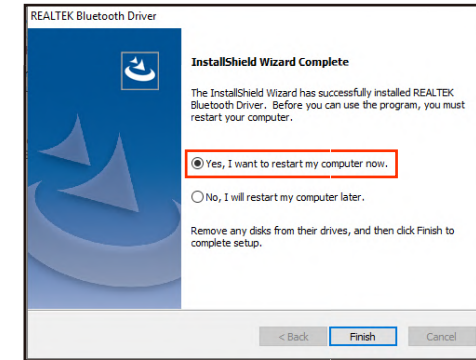
2. Place the CD drive into the computer, double-click on the pop-up folder to locate [setup.exe], then double-click to install.



3. Follow the pop-up window to click [Next].

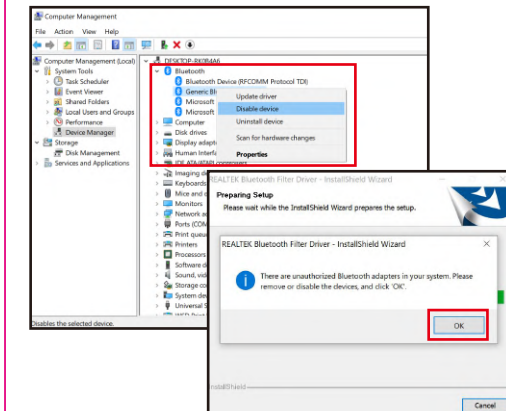


4. Click [Finish] to restart the computer and the computer system should be capable of the adapter



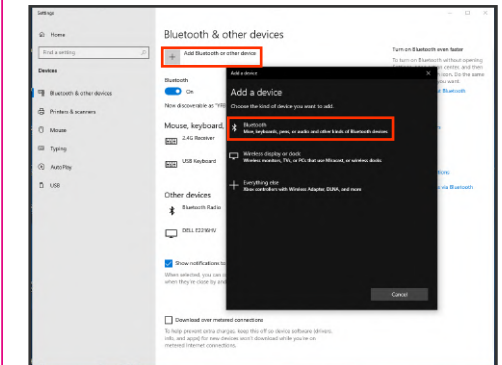
Notices: If your computer has internal Bluetooth. Please disable it to avoid conflict. The operation is as follows:

- Plug out the adapter;
- Enter [Device Manager] to disable built-in Bluetooth function of the computer.
- Plug the adapter into the computer again, click [OK] on pop-up window to proceed with installation

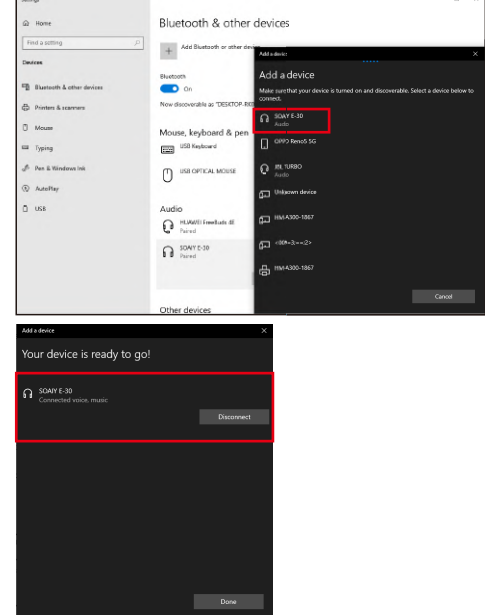


Step two-Bluetooth Pairing

- Turn on Bluetooth on your device.
- Double-click the icon [B] on status bar of the computer, click icon [+], then click [Bluetooth] to enter the Bluetooth devices list.

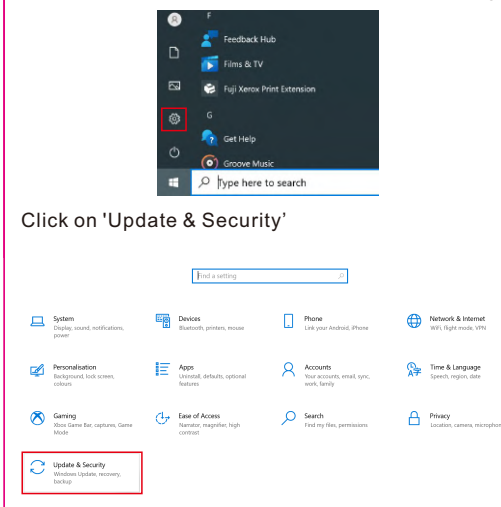


3. Find the device name in the list, click "connect"

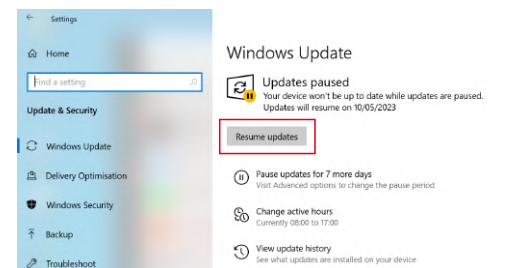


The product supports plug and play in Win8.1/10/11 system. If Bluetooth is not correctly connected, please check if the automatic update of Windows system is enabled.

The operation is as follows: Click on the "Start" icon in the bottom left corner of the computer--"Settings"



Click on 'Resume updates', after completion, plug the Bluetooth adapter again



FAQ

If the Bluetooth connection failed, please follow the steps below:

- During the connection, the Bluetooth device must be placed around the product at a range of 20m.
- If the display is frozen as Bluetooth connected, please restart the player.
- Please wait patiently during auto-connection process, for the speed may vary from different computer systems.
- If auto-reconnection process fails, please restart your Bluetooth device and try again.